



Description

BIT-WASH is a high-performance product which is designed for drilling through swelling clays, marls and any formation which is prone to create bit balling issues. **BIT-WASH** is a blend of anionic and nonionic surfactants which its mechanism is mainly reducing surface tensions between sticky clay particles and metallic tools. **BIT-WASH** can improve drilling condition by prevent clay sticking problems and improving rate of penetration.

Application

Main function of **BIT-WASH** is preventing and curing of clay accretion over the downhole tools. It is highly recommended for removing bit balling and also increasing rate of penetration. **BIT-WASH** pill can remove clays which are stuck over wellbore wall or BHA tools.

Advantages

- More effective compared to common drilling detergents
- Lower foam generation and rheological alterations compared to common drilling detergents
- Easy to mix through hopper
- Effective in low concentration
- Compatible with sea water
- Compatible with different types of water-based drilling fluids
- Minimizes possibility of balling on stabilizers
- Minimizes clay accretion on BHA
- Increases rate of penetration in swelling formations

Treatment

In case of bit balling or requirement to clean downhole tools from mud debris, 50 to 150 barrels of **BIT-WASH** solution can be applied by mixing 1-3% vol/vol of **BIT-WASH** in mud or water and pump it to the well periodically. It is highly recommended to perform the pilot tests at rig site before actual mixing, in order to prevent overtreatment and sever foaming.

Typical Properties

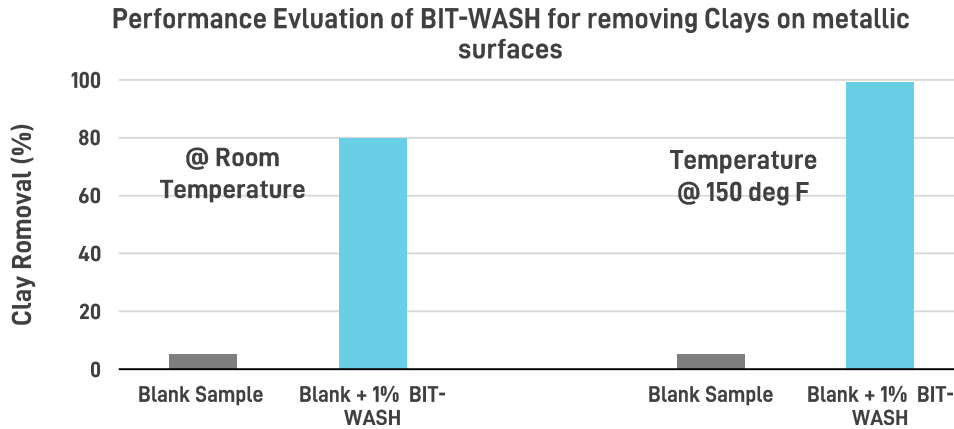
APPEARANCE	Yellow Liquid
SPECIFIC GRAVITY (in 77 °F)	1-1.1
Water Compatibility	Soluble
pH (10% solution)	>8
Flash Point	>300 °C
Freezing Point	< -10 °C

Packaging

BIT-WASH is available in 55-Gal Drums.

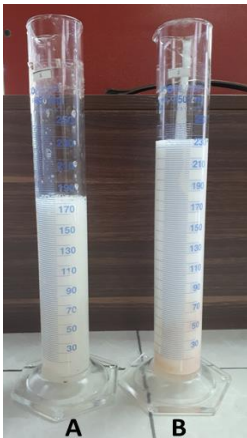


Laboratory tests have shown **BIT-WASH** effectiveness in preventing clays from adhesion is more than 80% or more, even at the low concentrations (1% vol/vol). In higher temperatures, the effectiveness of BIT-WASH is improved.



Blank Sample is a aqueous Solution with 1 lb/bbl Xanthan Gum + 10 gr of Clay

Laboratory tests have shown **BIT-WASH** has lower foam generation compared to common drilling detergents.



Foam Generation in a simple polymeric water-based drilling fluids;

(A) 1% vol/vol of BIT-WASH in mud

(B) 1% vol/vol of Drilling Detergent in mud